

# GanttProject Report

Project : iGEM\_Week3

Organization :

Web Link :

Description :

Date : 18-Jul-2006 13:33:53

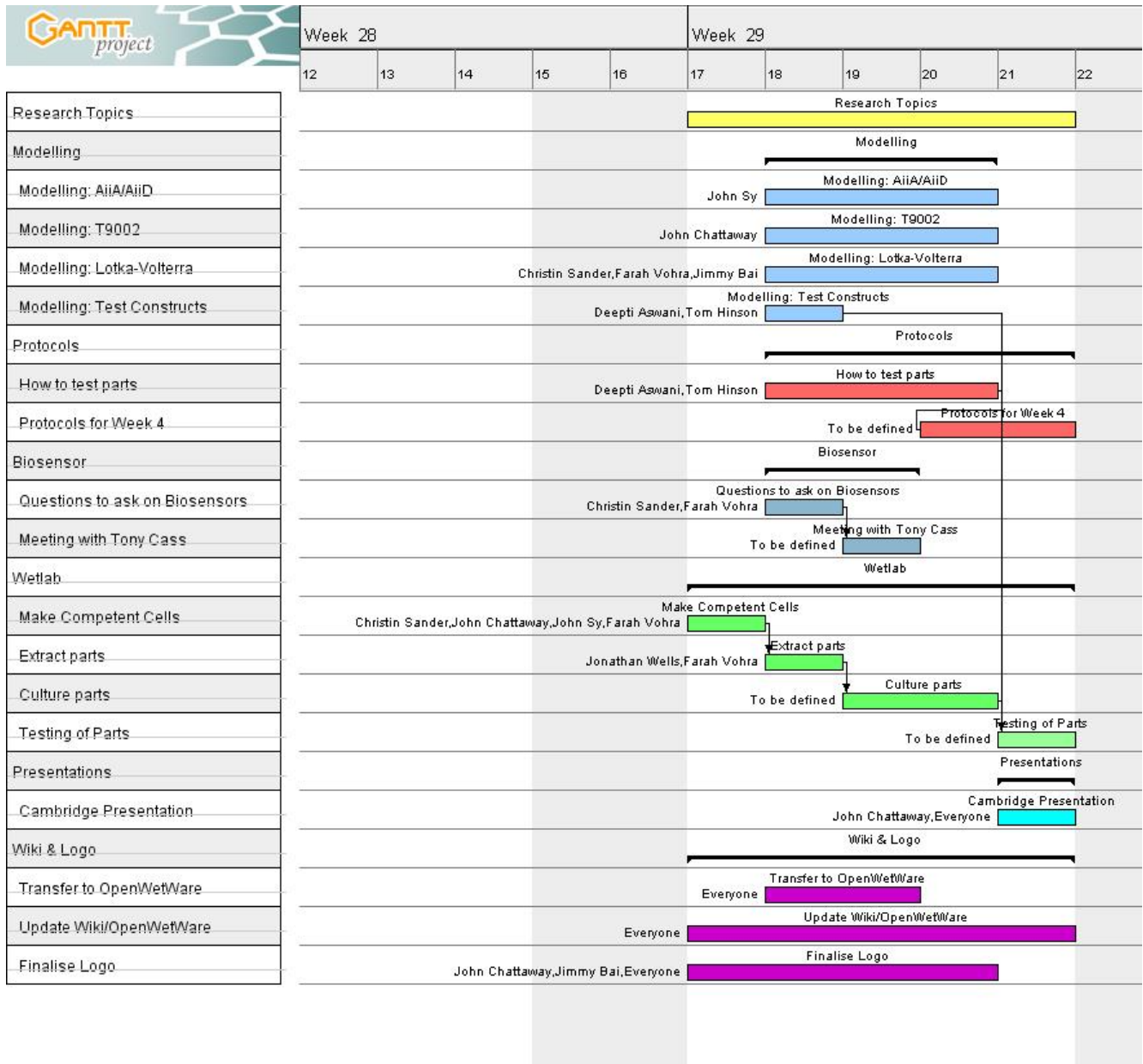
# Tasks List

Name	Start	End	Milesto	%	Res.	Notes
Research Topics	17/07/06	22/07/06	false	0	&#160;	
Modelling	18/07/06	21/07/06	false	0	&#160;	
Modelling: AiiA/AiiD	18/07/06	21/07/06	false	0	John Sy	
Modelling: T9002	18/07/06	21/07/06	false	0	John Chattaway	
Modelling: Lotka–Volterra	18/07/06	21/07/06	false	0	Christin Sander	
					Farah Vohra Jimmy Bai	
Modelling: Test Constructs	18/07/06	19/07/06	false	0	Deepti Aswani Tom Hinson	
Protocols	18/07/06	22/07/06	false	0	&#160;	
How to test parts	18/07/06	21/07/06	false	0	Deepti Aswani Tom Hinson	
Protocols for Week 4	20/07/06	22/07/06	false	0	To be defined	
Biosensor	18/07/06	20/07/06	false	0	&#160;	
Questions to ask on Biosensors	18/07/06	19/07/06	false	0	Christin Sander	
					Farah Vohra	
Meeting with Tony Cass	19/07/06	20/07/06	false	0	To be defined	
Wetlab	17/07/06	22/07/06	false	0	&#160;	
Make Competent Cells	17/07/06	18/07/06	false	0	Christin Sander	
					John Chattaway	
					John Sy Farah Vohra	
Extract parts	18/07/06	19/07/06	false	0	Jonathan Wells	
					Farah Vohra	
Culture parts	19/07/06	21/07/06	false	0	To be defined	
Testing of Parts	21/07/06	22/07/06	false	0	To be defined	
Presentations	21/07/06	22/07/06	false	0	&#160;	
Cambridge Presentation	21/07/06	22/07/06	false	0	John Chattaway	
					Everyone	
Wiki & Logo	17/07/06	22/07/06	false	0	&#160;	
Transfer to OpenWetWare	18/07/06	20/07/06	false	0	Everyone	
Update Wiki/OpenWetWare	17/07/06	22/07/06	false	0	Everyone	
Finalise Logo	17/07/06	21/07/06	false	0	John Chattaway	
					Jimmy Bai Everyone	

# Resources List

Name	Default role	Mail	Phone
Name:Christin Sander	undefined		
Name:Deepti Aswani	undefined		
Name:Farah Vohra	undefined		
Name:Jimmy Bai	undefined		
Name:John Chattaway	undefined		
Name:John Sy	undefined		
Name:Jonathan Wells	undefined		
Name:Tom Hinson	undefined		
Name:Everyone	undefined		
Name:To be defined	undefined		

# Gantt Chart



# Resources Chart

